

212fw-15 Girly Style Flower Scarf



Suggested yarn:

- Filatura Botto Poala Aspen 3 [100% cashmere; 126 yds/115m per 0.88 oz./25g skein];
 - color #01 off-white, 1 skein [25g]
 - color #03 greige, 2 skeins [45g]
 - color #07 baby pink, 3 skeins [70g]

Tools/Notions:

- 3.5mm (US E) crochet hook or size necessary to achieve gauge

Finished measurements:

- width 33cm/12.99"
- length 130cm/51.18"

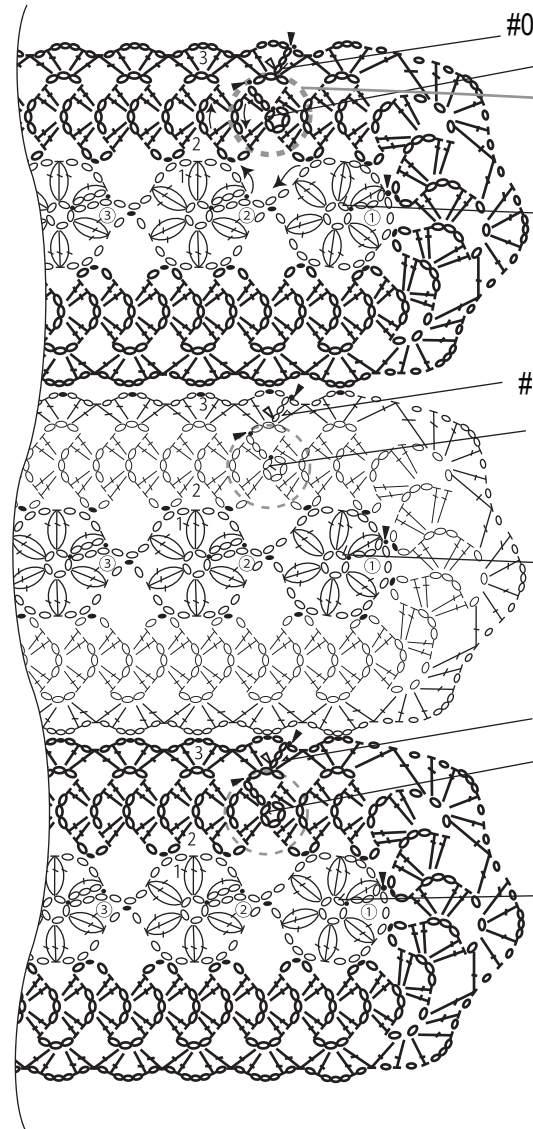
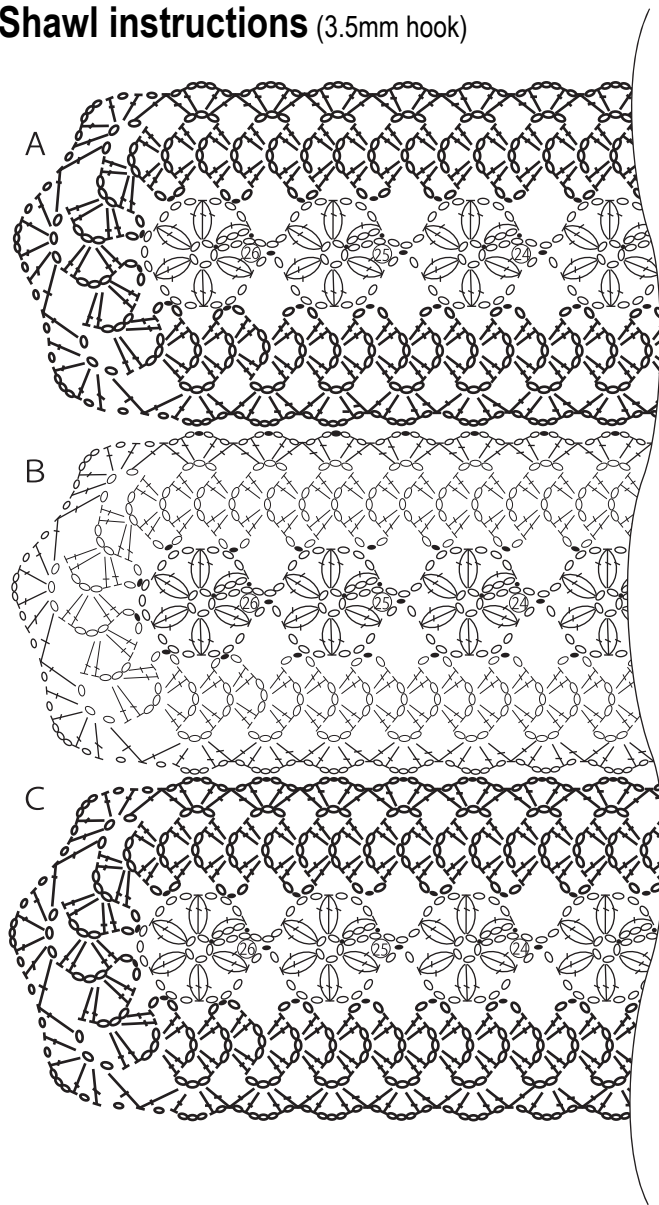
Crochet Tips

Motif A: With color #07 baby pink, ch5 and join into the round. Crochet 26 flower motifs, joining together as you go. With color #03 greige, ch5 and join into the round. Crochet, joining to flower motifs with slip stitch as you go.

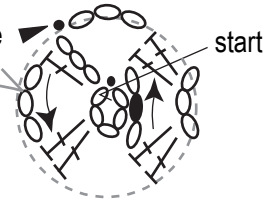
Motif B: Just as for motif A, crochet flower motifs with color #07 baby pink. With color #01 off-white, ch5 and join into the round. Crochet round 2. With color #07 baby pink, crochet round 3, joining to A as you go.

Motif C: Work just like motif A. On round 3, join to B as you go.

Shawl instructions (3.5mm hook)



#03 greige
start: #03 greige



#07 baby pink
start: #01 off-white

start: #07 baby pink

#03 greige
start: #03 greige

start: #07 baby pink

△ = join yarn
▲ = cut yarn

Shawl construction (3.5mm hook)

